

EXCLUSIVE COUNTRY PARK LIVING
26 minutes from Central London*



1, 2 and 3 bedroom apartments plus 4 and 5 bedroom houses

Set within the expansive Trent Country Park in North London,
explore a majestic collection of homes and apartments.

Sales & Marketing Suite
Trent Park, Snakes Lane (off Bramley Road), Enfield, London EN4 0PS
Open daily 9am - 5pm

To arrange a viewing please contact:
020 3813 9572 | TRENT-PARK.CO.UK



A 56 acre estate located in
the mature 413 acre
Trent Country Park



A protected
community offering
safety and security



Influential
schooling in the
surrounding area



Gym, tennis courts
and open air
swimming pool



14 minute* drive
to M25 J24



26 minutes* to London
King's Cross
from Oakwood Station

Details correct at time of going to press and subject to availability. Computer generated images of Trent Park are indicative only. *All times, excluding car travel, are based on travelling at 7.30am on a weekday. Source: tfl.gov.uk

*An insider's
guide to*
TRENT PARK

BROUGHT TO YOU BY BERKELEY HOMES

EXPLORE

*With 413 acres of parkland to explore and an excellent range of amenities
at Cockfosters and Oakwood, take time to discover living at Trent Park*

WHAT'S CLOSE BY?

From the eclectic mix of cafés and shops
in Cockfosters to the thriving arts scene of
North London, discover all the ways to be
entertained nearby.

pages 04–07

A TRIP AROUND TRENT PARK

Get to know the great outdoors that's
right on your doorstep and see what
this country estate has to offer family
members of all ages.

pages 08–11

ACTIVE PURSUITS

Follow a delightful section of the
'London LOOP', take to the trees
with Go Ape, or get fit and healthy
even closer to home.

pages 12–15



AN INSIDER'S GUIDE

From days spent stomping through the woods to a quick catch-up over a coffee, Trent Park offers it all.

W

H

WHERE TO...

E

Impressive, invigorating and immersed in history, Trent Park is a huge country estate set in 413 acres of parkland.

A place of intense natural beauty, this is where the aristocracy spent summers and secret listeners helped to win WWII. Now, it's a thriving community that enjoys all the advantages of such close proximity to Cockfosters and Oakwood.

In the heart of North London yet seemingly a million miles away, here you can revel in the great outdoors yet enjoy the convenience of easy access into the city.

Take the time out to discover it all...

R

E

...



PINT OF MILK

Tesco Express,
153 Bramley Road
N14 4XA

0.9 MILES AWAY



BAKER

Raphael's Bakery & Patisserie,
4 Station Parade, Cockfosters Road
EN4 0DL

1.2 MILES AWAY



POST OFFICE

Two in One Post Office,
209 Bramley Road
N14 4XA

1.0 MILE AWAY



DOCTOR

Bincote Road Surgery,
11 Bincote Road
EN2 7RD

1.9 MILES AWAY



VET

Cockfosters Veterinary Surgery,
23 Heddon Court Avenue, Cockfosters Road
EN4 0DB

1.7 MILES AWAY



FISHMONGER

Poisson
7 Station Parade
EN4 0DL

1.7 MILES AWAY



GYM

Nuffield Health Fitness & Wellbeing Gym,
Tower Point, 52 Sydney Road
EN2 6SZ

3.6 MILES AWAY



FLORIST

Burgeon Floral Design
106 Cockfosters Road
EN4 0DP

1.6 MILES AWAY

Everything you need for an easy and enjoyable life at Trent Park is closer than you think. In nearby Cockfosters and Oakwood, you can find a colourful and cosmopolitan mix of high street and boutique shopping. Whether you are keeping up with your weekly workout in the gym, catching up with friends over coffee, everything you need is right on your doorstep.

EVERYDAY ESSENTIALS

COCKFOSTERS AND OAKWOOD



DENTIST

Cockfosters Dental Clinic,
23, Station Parade
EN4 0DW

1.7 MILES AWAY



GROCERIES

Fio's Food Centre
2-4 Cockfosters Parade
EN4 0BX

1.8 MILES AWAY



TRADITIONAL BUTCHER

F. Norman,
199 Bramley Road
N14 4XA

1 MILE AWAY



ESPRESSO

Wildlife Tearooms
Trent Park, Cockfosters Road,
Barnet EN4 0PS

0.2 MILES AWAY



DELI

Cockfosters Delicatessen,
19 Station Parade, Cockfosters Road
EN4 0DW

1.7 MILES AWAY



GASTROPUB

The Cock Inn,
Chalk Lane
EN4 9HU

0.9 MILES AWAY



PHARMACY

Simmons Pharmacy,
111 Cockfosters Road
EN4 0DA

1.8 MILES AWAY



LIBRARY

Oakwood Library,
185-187 Bramley Road
N14 4XA

1.1 MILES AWAY

WHAT'S CLOSE BY?

Trent Park is just moments from a great range of amenities clustered around Cockfosters and Oakwood. The immediate area boasts an impressive array of eateries and places to spend the evening.

A wide selection of restaurants and bars isn't the only attraction. There are plenty of places to indulge in a little retail therapy too, including delightful independent boutiques. You'll also find everything you need for everyday life close by as well as a few special places that are worth heading further afield to enjoy.

Trent Park is ideally oriented within a short distance of East Barnet Village and Cockfosters to the south west and Oakwood to the south east.

Deraliye restaurant



Traditional Turkish Cuisine
See page 17



*New trees and planting will provide
a habitat for the existing wildlife
at Trent Park*

Trent Park

GREAT OPEN SPACE TO EXPLORE

*Immerse yourself in the great outdoors. The expansive
countryside that stretches for miles in all directions
is your backdrop to enjoy an open, naturally
inspired way of living.*

GREEN CHARACTER



413

*acres of Trent Country Park
surrounding the development*



3.5km

*of ungated walking and cycling routes
within the wider Trent Country Park*



30+

*acres of historic landscape
reinstated, including Lime Tree
Avenue and Wisteria Walk*



447

new trees planted across Trent Park

EXPLORE THE LAWN CLUB

Keeping fit and healthy.



Residents' exclusive

ON-SITE LEISURE FACILITIES

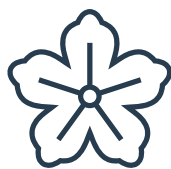
Keep moving when life gets in the way



Open air swimming pool to relax and refresh your mind and body



Fully equipped gym where you can stay active in opulent surroundings



Acres of beautifully maintained gardens



Outdoor restored tennis courts in woodland setting



Spend some quiet time in Trent Park reading room



Residents' shuttle to Oakwood underground station

KEEPING FIT AND HEALTHY

The rejuvenated Orangery is an aesthetic delight, where you can stay active with everything you need in one place. In these opulent surroundings, you can work on the body and mind, and channel energies into a new interest.

Images shown opposite (from top to bottom, left to right): All Computer generated images and indicative only. Swimming pool and orangery, residents' gym within The Orangery and residents' reading room within the Mansion House at Trent Park .

Trent Park's elegant open air swimming pool, popular with society guests of the 1920's, is now beautifully restored for residents of Trent Park, while the Orangery offers a fully fitted state-of-the-art gym.

Did you know?

Royalty and the rich and famous enjoyed time on the Trent Park tennis courts. Renovated to modern standards, enjoy a sense of history as you prepare to serve.



A SIGHT TO BEHOLD

Prepare to be captivated the moment you step outside your front door – a world of natural wonder awaits.

Over 30 different species of birds can be found around the development including; Song Thrush, Tawny Owls, Great Spotted Woodpeckers and Goldfinches.

Whatever the season, Trent Park is blessed with stunning scenery, natural habitats and plenty of wildlife to look out for. To be sure of spotting some of the more interesting species, you can follow one of two dedicated wildlife walking routes.

Take the red route through the Nature Trail, on to the Duke’s Pyramid and back past the ‘Pineapple’. Or choose the ever so slightly longer yellow route that skirts the edge of Trent Park as far as Sassoon’s Obelisk and Camelot Moat before returning home through Moat Wood.



John Murdoch sketching landscape detail of Trent Park

DAFFODIL LAWN

APPROXIMATELY 150,000 NEW HERITAGE DAFFODILS PLANTED TO RESIDE THE LAWNS IN FRONT OF THE MANSION. VARIETIES TO INCLUDE: NARCISSUS ‘CULTON’, NARCISSUS ‘GOLDEN PINEAPPLE’ AND ‘KING ALFRED’



EXISTING GROUND TO BE DE-COMPACTED PRIOR TO PLANTING

LANDSCAPING VISION

Every effort has been made to create a truly accessible environment in which people of all ages and abilities will feel free to interact.

Q) WHAT IS YOUR VISION FOR THE MASTERPLAN?

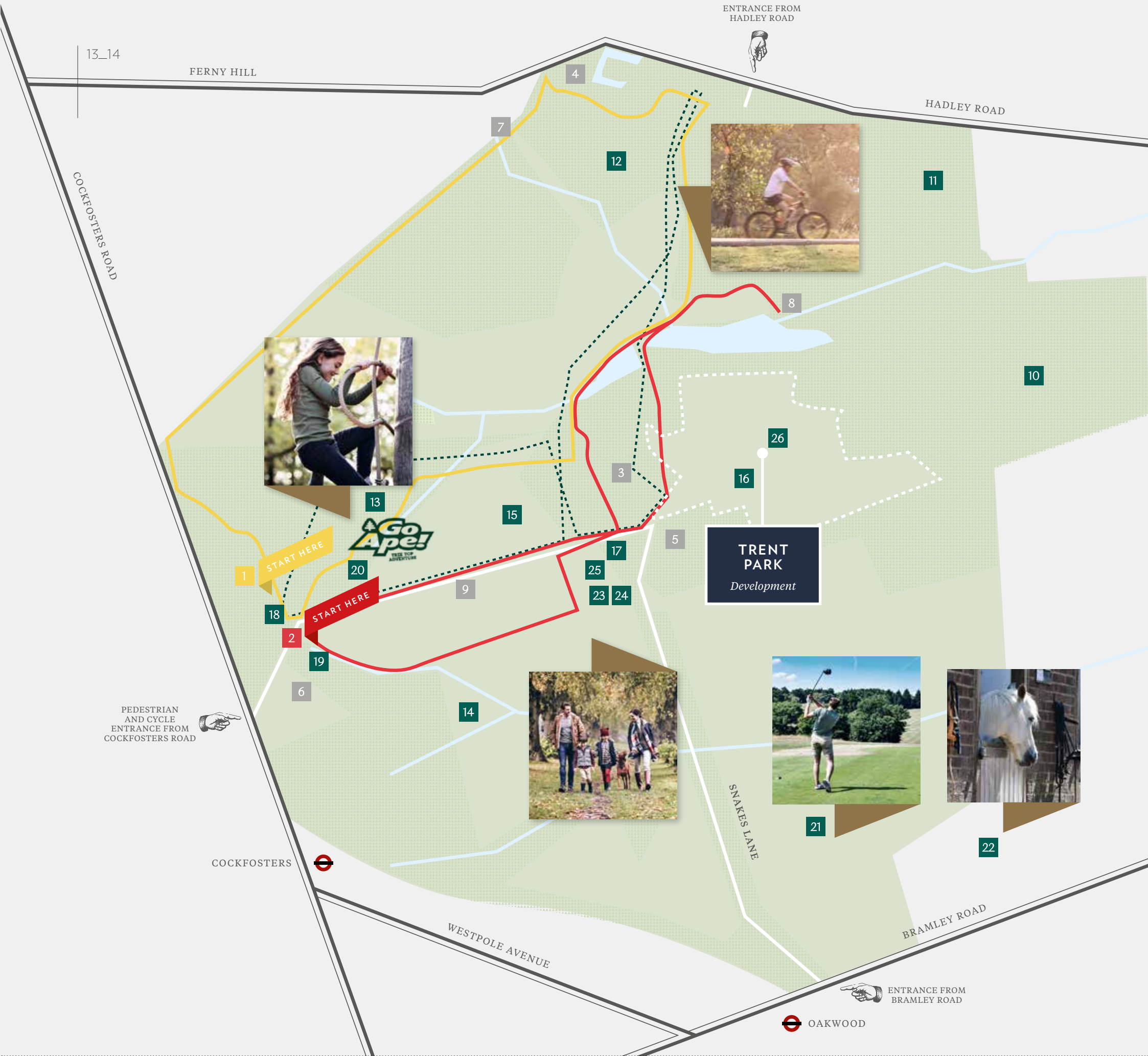
A) The Masterplan seeks to create a sense of place for the future residents by creating a series of cohesive neighbourhoods. These neighbourhoods have a range of traditional architectural styles which allow them to appear to have evolved naturally over time, just as a traditional suburb would have done in the past.

The important Listed buildings on the site are enhanced and together with the parkland setting itself they inform the arrangement of the roads, services and buildings on the site.

Visit ‘Landscaping Vision’ at trent-park.co.uk for the full interview.

Q) WHAT INFLUENCES INSPIRED YOUR VISION?

A) The Garden Suburb movement of the early twentieth century which resulted in schemes such as Hampstead Garden Suburb are a major influence in the development of the Masterplan. Traditional architectural styles found in local buildings from the last two centuries as well as the early twentieth century’s Arts and Crafts Movement of Lutyens, Parker and Unwin are big influences.



KEY AREAS TO THE PARK

- 1 Yellow Walking Route (2.4 miles)
- 2 Red Walking Route (2.3 miles)
- Cycle trail
- 3 Nature Trail
- 4 Camelot Moat
- 5 The Emma Crewe ‘Pineapple’
- 6 The Duke’s Pyramid
- 7 Sassoon’s Obelisk
- 8 Water Garden
- 9 Limes Avenue
- 10 Williams Wood
- 11 Ride Wood
- 12 Moat Wood
- 13 Oak Wood
- 14 Church Wood
- 15 Meadow
- 16 Daffodil Lawn
- 17 Wildlife Rescue Centre and Café
- 18 Children’s Play Area (Toddlers)
- 19 Children’s Play Area (Juniors)
- 20 Go Ape
- 21 Trent Park Golf and Country Club
- 22 Trent Park Equestrian Centre
- 23 Southgate Hockey Centre
- 24 Trent Park Running Club
- 25 Tennis Courts
- 26 Swimming Pool and Gym

– Yellow walking route

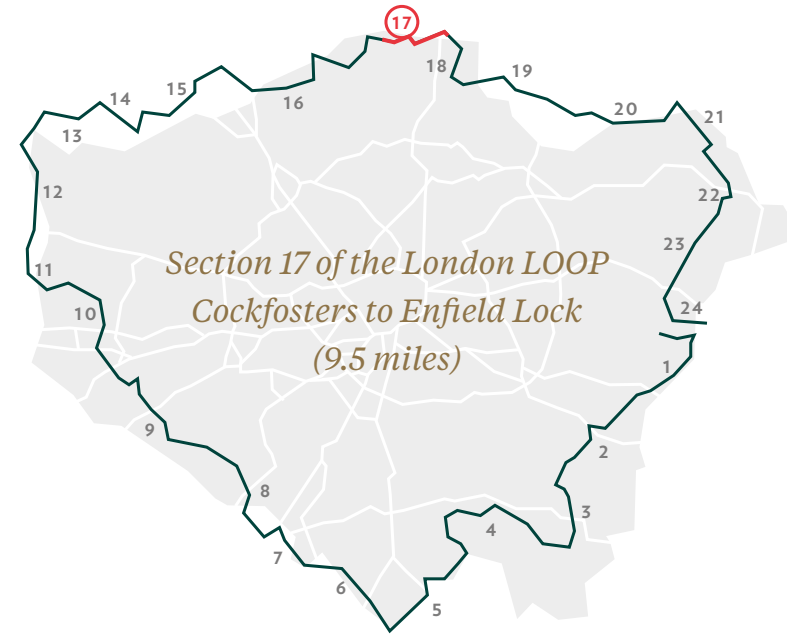
This route will take you to the north west area of the park passing the underground reservoir to the wooded area.

– Red walking route

This route will take you to the east of the park following the Blind Trail then beyond the Go Ape area.

AROUND AND ABOUT

The London Outer Orbital Path – more commonly known as the 'London LOOP' – is a 150-mile (240km) stretch of connected public footpaths around the Capital. Taking you through parks, woods and fields at the edge of the city, it is also affectionately known as the 'M25 for walkers'.

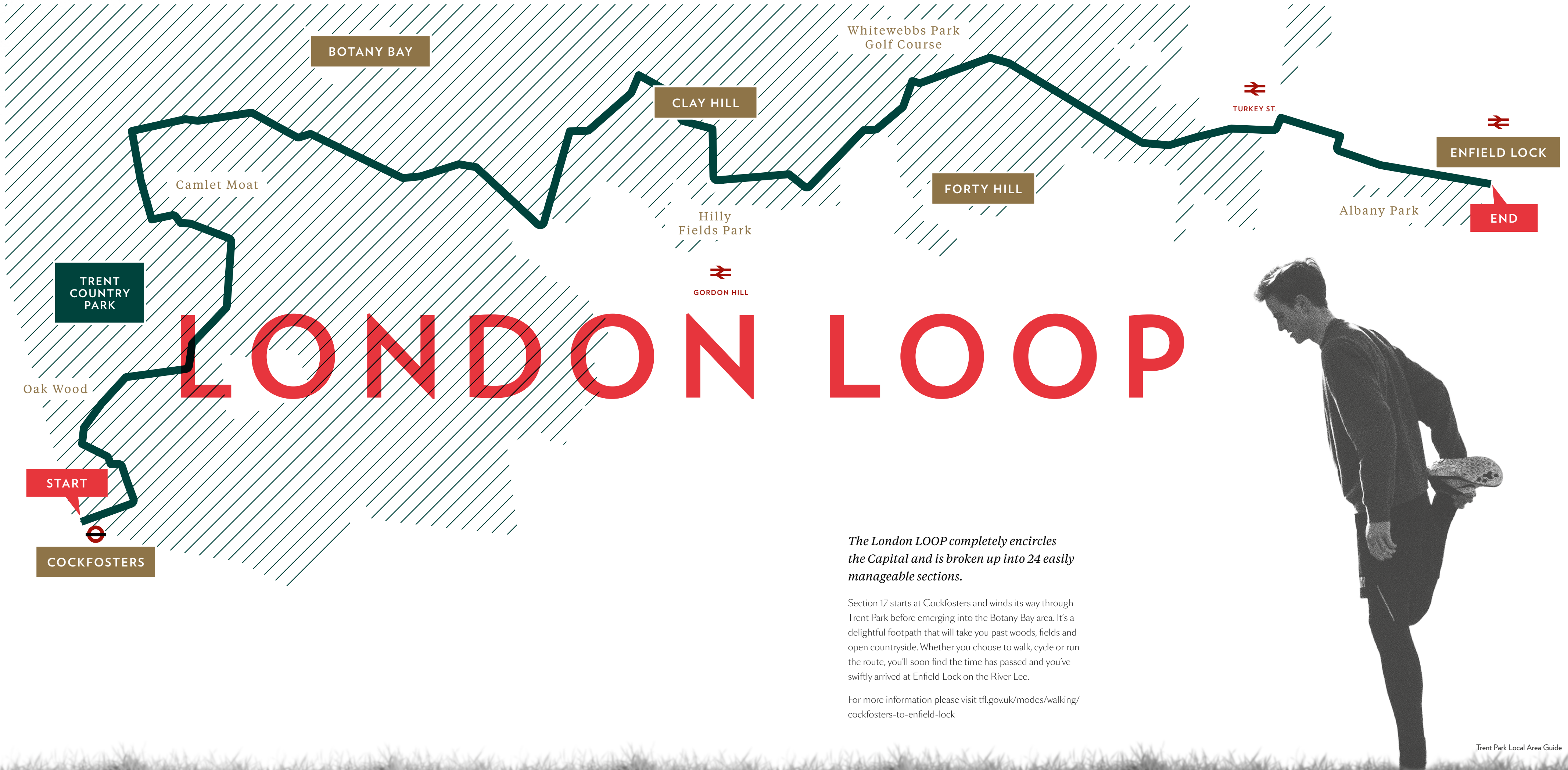


15_16

This is a long and rural section through an area alive with history. It goes by Trent Park, through the farmland of Enfield Chase and Hilly Fields Park and the Forty Hall Estate.

Did you know?

The walk was given an official launch at the House of Lords in 1993. The first section was opened on 3 May 1996, with a ceremony on Farthing Downs, Coulsdon.



The London LOOP completely encircles the Capital and is broken up into 24 easily manageable sections.

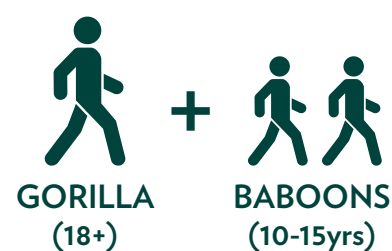
Section 17 starts at Cockfosters and winds its way through Trent Park before emerging into the Botany Bay area. It's a delightful footpath that will take you past woods, fields and open countryside. Whether you choose to walk, cycle or run the route, you'll soon find the time has passed and you've swiftly arrived at Enfield Lock on the River Lee.

For more information please visit tfl.gov.uk/modes/walking/cockfosters-to-enfield-lock



TREE TOP FUN

SUPERVISION RATIOS



16 & 17 year olds can supervise themselves but not others

MINIMUM AGE:
10 YEARS

MINIMUM HEIGHT:
1.4M (4' 7")

MAXIMUM WEIGHT:
130KG (20.5 STONE)

Unforgettable adventures begin with exhilarating times up in the trees for you and the little ones in your tribe.

Experiencing the true spirit of the great outdoors rarely comes more adrenalin-pumping than this. The treetop adventure at Go Ape Cockfosters will take your breath away as quickly as it creates lifelong memories. In a safe and controlled environment, you and the kids (10-years and older) can enjoy taking fun to a whole new level among the canopy. Challenge your nerve and cross the Indian rope ladder one careful foot step at a time, swing like Tarzan or Jane between trees, or harness up and speed down the 120 metre Alpine Zip Wire at heart-thumping speeds.

OPENING TIMES

These forest doors are open all year round so there's plenty of time to live life adventurously. To see when you can unleash your inner ape visit the website to view available booking dates, times and prices.

goape.co.uk/days-out/london/trent-park



**LONGEST
ZIP**
120
METRES

**HIGHEST
PLATFORM**
16
METRES

**LONGEST
CROSSING**
32
METRES

**TOTAL
LENGTH**
622
METRES

17_18



TRENT PARK EQUESTRIAN CENTRE

A riding school with adorable horses and amazing teachers.

There are few better connections with nature than a horseback ride through the woodlands. Led out by an experienced instructor, you can team up with a four-legged friend and be put through your paces.

OPENING TIMES

MONDAY
Closed

TUESDAY - THURSDAY
9.45am-8.15pm

FRIDAY
9.45am-4.15pm

SATURDAY & SUNDAY
9.00am-5.00pm

CHILDREN'S RIDING LESSONS
From £30*

ADULT'S RIDING LESSONS
From £37*

WILDLIFE CENTRE

TRENT PARK WILDLIFE RESCUE AND AMBULANCE SERVICE

Get up close and personal with the work of those who care for Trent Park's sick and injured wildlife.

The people here are passionate about the animals under their care. For visitors, it's an eye-opening experience and a great place to spend time with the family getting to know more about nature.

OPENING TIMES

10.00am - 4.15pm (last entry)
wras-enfieldwildlife.org.uk

*Prices correct at time of going to print and subject to change.

Trent Park Local Area Guide

PLACES TO EAT AND DRINK

Trent Park is surrounded by a mix of welcoming independent bars and pubs, boutique bistros, fine dining restaurants and cafés. Whether you're stopping off for a quick hour or socialising with family and friends, there's always something to tempt your senses.

Relax in a café with a coffee and watch the world go by...



CAFÉS AND



WILDLIFE TEAROOMS

What a hidden gem. I had a fabulous lunch here with my mum. The portions are huge! The staff are amazing and very attentive. The food is good and we could not resist taking away homemade apple strudel for afternoon tea.

Ana R, TripAdvisor

MIDDEYS BRASSERIE & LOUNGE BAR
10 Cockfosters Parade,
Cockfosters Road EN4 0BX
020 8449 8777
middeys.co.uk

HEDDONS KITCHEN
19 Heddon Court Parade,
Cockfosters Road, EN4 0DB
020 8449 0255
heddonskitchen.co.uk

TRENT PARK CAFÉ
Trent Park
EN4 0DL
020 8379 1000

WILDLIFE TEAROOMS
Trent Park EN4 0JY
0208 344 2785
wras-enfieldwildlife.org.uk

19_20



Unusual food in a fun setting plus attentive service lifted Skewd out of the ordinary and provided an entertaining and rewarding evening.

Hertfordshire Life

Skewd Kitchen serve the best of Anatolian cuisine with a modern take.

SKEWD KITCHEN
12 Cockfosters Parade
020 8449 7771
skewdkitchen.com

Just a mile away from Trent Park



Anatolian Cuisine



Traditional Turkish Cuisine

Deraliye is a fusion between authentic Turkish cuisine and Mediterranean flavours. Located in the heart of Cockfosters, the restaurant has a unique décor that draws inspiration from the Ottoman Empire.

DERALIYE
98 Cockfosters Rd
020 3417 5270
deraliye.co.uk

Just over a mile away from Trent Park

RESTAURANTS

La Petite Auberge is a beautiful brasserie, restaurant and cocktail bar in Cockfosters influenced by the grandiose bistros of France.

LE PETITE AUBERGE
12-13 Heddon Court
Parade, Cockfosters Road
0208 447 1777
petiteauberge.co.uk

Just over a mile away from Trent Park



French bistro-brasserie

FUN

FOR ALL

TRENT PARK GOLF CLUB

199 Bramley Road, Trent Park

TRENT PARK GOLF CLUB

Improve your golf but at the same time make the golf lessons experience fun. Improve your driving, short and long iron play, short game and putting rapidly!

- 34 bay driving range
- Tee To Green golf coaching

trentparkgolf.co.uk



Trent Park Golf Course in North London is a stunning 18 hole public pay and play golf course, open to everyone, it's situated within the wider Trent Country Park.

CLUB DU SOIR

Every Friday night at Trent Park Country Club we host our unique experience Club Du Soir.

A night of live music, food and drink in a chilled decadent atmosphere that you can share with a loved one or friends and family.

countryclubtrentpark.co.uk/clubdusoir



LILY'S LOUNGE

Be tempted by our menu that has a range of specially-created must-try dishes perfect for brunch, lunch or dinner.

It's a great setting for an intimate meal or to gather a group of friends and family.

Our bar stocks everything from specially-selected house wines to premium champagnes such as Cristal.

We offer a wide drinks selection including both classic and our own innovative cocktails.

countryclubtrentpark.co.uk/restaurant

THE



TRENT PARK FOOTBALL

Trent Park Football is proud to offer the latest 5 and 7 a side stadium turf pitches in North London.

With the latest 5G ProTurf pitches along with LED lights, you will feel like you are playing at Wembley to showcase your footballing skills.

www.trentparkfootball.co.uk



ADVENTURE GOLF

Jungle Falls has 18 holes of fun-filled action, packed with life sized hungry creatures prowling lush jungle marshes, cascading waterfalls and secret giant caves nestled within a landscape of tropical palm trees.

trentparkgolf.co.uk/adventure-golf

FAMILY

You don't have to go far to enjoy a movie, visit a gallery, catch a live performance, or take part in one yourself. With Central London only 26 minutes away, Trent Park is perfect for when you want to visit the Capital for a slice of city entertainment.



ENFIELD AND FURTHER AFIELD

There are many cultural attractions in the area and beyond to enjoy.

The state-of-the-art Everyman cinema in Barnet shows the latest releases in 2-D and 3-D. It also hosts events during the year, broadcasting live opera from The Royal Opera House and performances from The National Theatre.

3.7 miles from Trent Park

EVERYMAN

POISSON FISHMONGERS
7 Station Parade, Cockfosters

An independent fishmonger with a wide range of catch, mainly caught off the south coast of England during short day and night expeditions.

7 Station Parade, Barnet EN4 0DL
020 8449 0335 poissonfish.com

Just under 2 miles from Trent Park

Recipe

Grilled mackerel with orange salad

Oranges work really well with mackerel and make a refreshing addition to this simple, zesty salad. Perfect for lunch!

🕒 20 MINUTES 🍽️ SERVES 2 👨🍳 EASY

Ingredients

New potatoes 200g, 2 Mackerel 120g, Olive oil, 2 segmented oranges, ½ small sliced red onion, 2 handfuls of rocket, 1 tbsp sherry vinegar

Method

Steam or boil the new potatoes until tender, for about 15-20 minutes.

Meanwhile, brush each mackerel all over with 1 tsp oil, season well then grill for 3-4 minutes each side or until cooked through.

Toss the orange, onion, rocket and potatoes together and then drizzle with the vinegar and 1 tbsp olive oil.

Serve the mackerel with the salad.

Source: www.olivemagazine.com

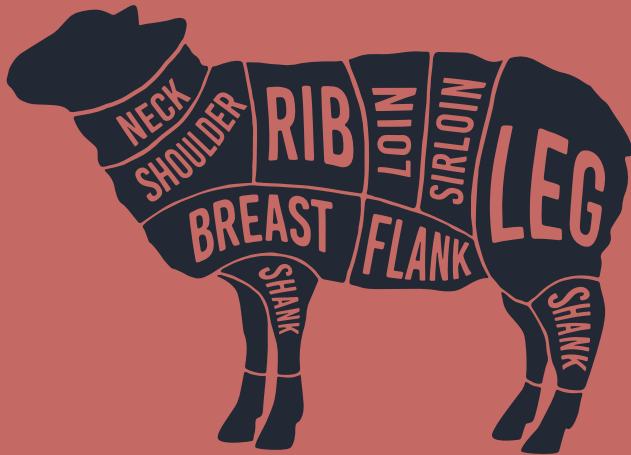
Nutrition: per serving

Kcals 535	Protein 32.7g	Carbs 31.6g	Saturates 5.9g
--------------	------------------	----------------	-------------------

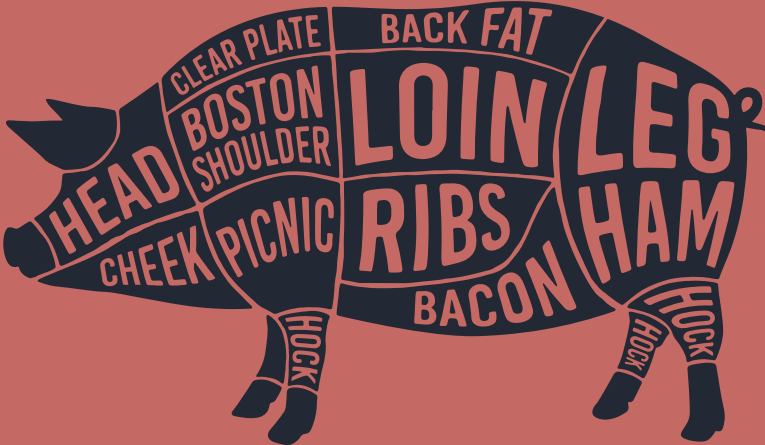
NORMAN'S
TRADITIONAL FREE RANGE BUTCHERS
199 Bramley Road, Oakwood

Under 1 mile from Trent Park

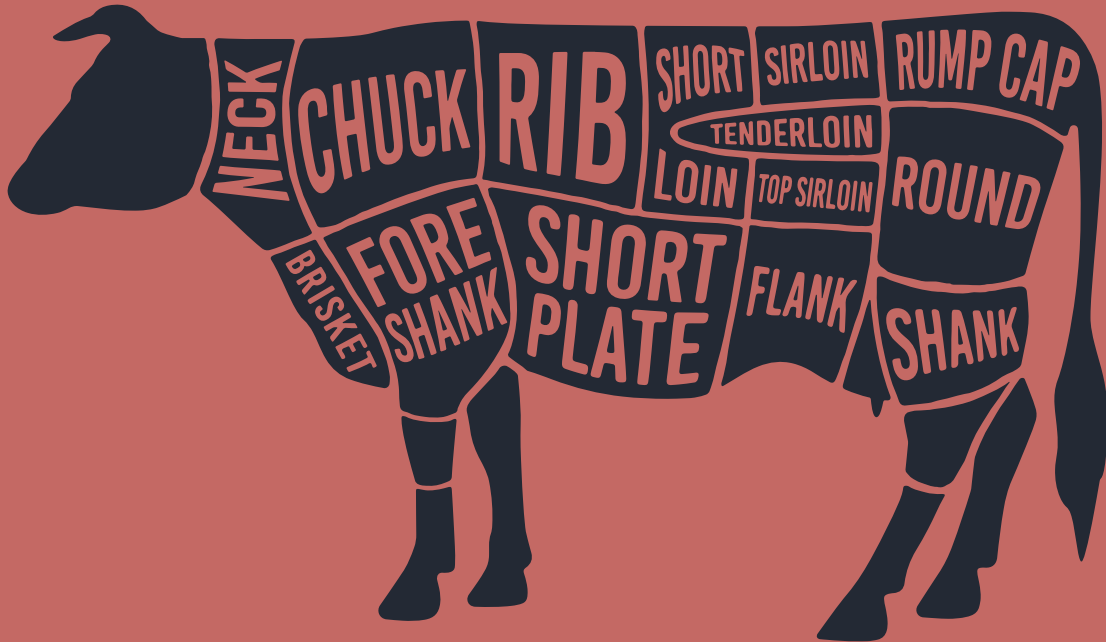
The Butchers guide



Our lamb is english rare-breed romney salt marsh lamb and is delivered fresh every week.



Our pork is english rare breed. we use blythburgh and old spot pigs from suffolk and tamworth, berkshire and saddleback pigs specially bred in cumbria. All of our pork is delivered fresh weekly.



All of our beef is scotch aberdeen angus, delivered fresh and hung for 4/5 weeks to mature.

Norman's Traditional Butchers has been established in Oakwood, Enfield, for over 75 years. Joe and his staff pride themselves in their standard of service and customer care supplying Free Range and Rare Breed meat.

199 Bramley Road, Oakwood, Enfield N14 4XA
020 8363 0293 fnorman.co.uk

*Exclusive Belgian Chocolate
and wide range of giftware,
cards, balloons and new baby
gifts available.*

THE CHOCOLATE SHOP
Station Parade, Cockfosters Road,
Barnet EN4 0DL
020 8449 7615

*Just under a mile away
from Trent Park*



25_26

*Contemporary
homeware*



*Brit Maison offers
a range of homeware for
contemporary living.*

BRIT MAISON
9 Heddon Court Parade,
Cockfosters Road,
Barnet EN4 0DB
020 8449 8359

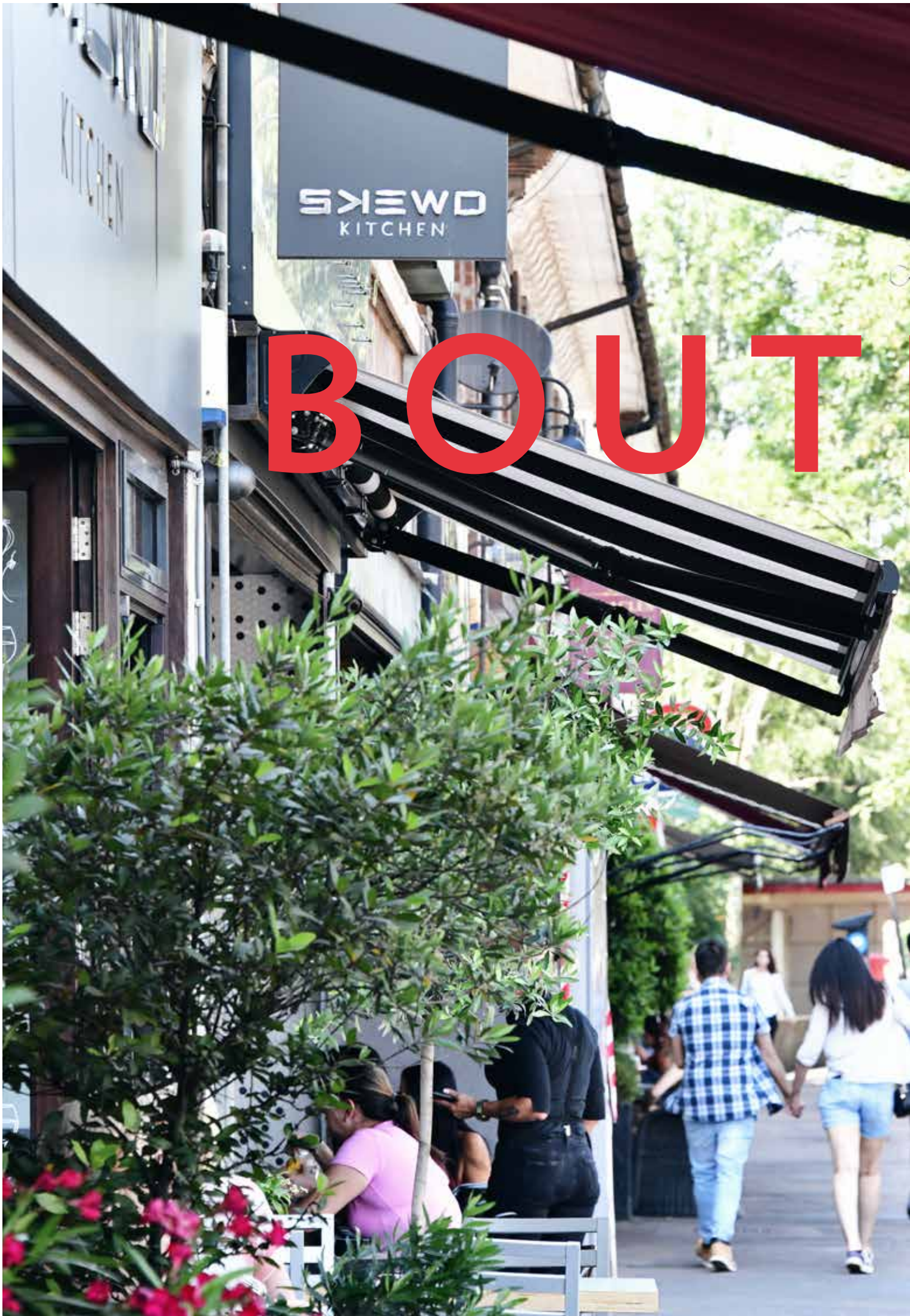
*Just under 2 miles away
from Trent Park*



*The best local seasonal farm
produce including free range
poultry, freshly baked bread,
cakes and pastries as well as
gluten-free.*

BOTANY BAY FARM SHOP
The Ridgeway, Enfield EN2 8AP
020 8366 4929

*Under five miles away
from Trent Park*



*Award-winning local florist Helen
Sawa has been leading the team
at Burgeon since 1992.*

BURGEON FLORAL DESIGN
106 Cockfosters Road,
EN4 0DP
020 8441 6661
burgeon.co.uk

*Just under a mile away
from Trent Park*

*A refined collection of boutique shopping
and high street brands will surprise and entice,
making this the ideal setting to relax and
discover something new.*



*Creative
Florists*

*Bespoke
Jewellers*



*North London's most creative
jewellers, where bespoke designs
are brought to life.*

V JEWELLERS
24, Heddon Court,
27 Cockfosters Road,
EN4 0DB
020 8449 6644
vjewellers.co.uk

Just under 2 miles away from Trent Park

JONES

93 BRAMLEY ROAD, OAKWOOD

HERE TO SERVE

Traditional British tailor

JONES &
JONES

93 BRAMLEY ROAD, OAKWOOD

Experts in the art of tailor-made garments, Jones & Jones focus on every detail – from the fine stitching that will finish off a bespoke jacket to their unique approach to customer service.

JONES & JONES
Made to measure, bespoke suits in Oakwood.

93 Bramley Road
N14 4EY
020 8882 8949
tailors-london.com
1 mile away from Trent Park

Traditional British tailor

JONES &
JONES

93 BRAMLEY ROAD, OAKWOOD



27_28

PERSONAL STYLING SERVICE

Story offers something different from the usual shopping experience. With the latest designer outfits and a personal styling service available, you'll enjoy one-on-one time with people who'll find exactly what you're looking for.

STORY

Story offers unique and stylish women's fashion pieces from a selection of luxury designers.

102 Cockfosters Road,
Barnet EN4 0DP
020 8364 8181
storylondon.co.uk

Just under 2 miles away
from Trent Park



SO CHIC

As a leading UK based design consultancy they specialise in residential and commercial projects offering a one stop design and build service as well as a full range of truly stunning luxury products available from their retail outlets.

So Chic has grown steadily year on year to include a wide range of national and international clients such as royalty, celebrities and multinational corporations.

SO CHIC

Address: 5 Heddon Court Parade,
Cockfosters, EN4 0DB

020 84401881
sales@sochiclondon.co.uk

Just under 2 miles away
from Trent Park

