

Client

Berkeley

Publication / Date

London Property Times / 22 November 2021

Frequency / Circulation

Online / N/A

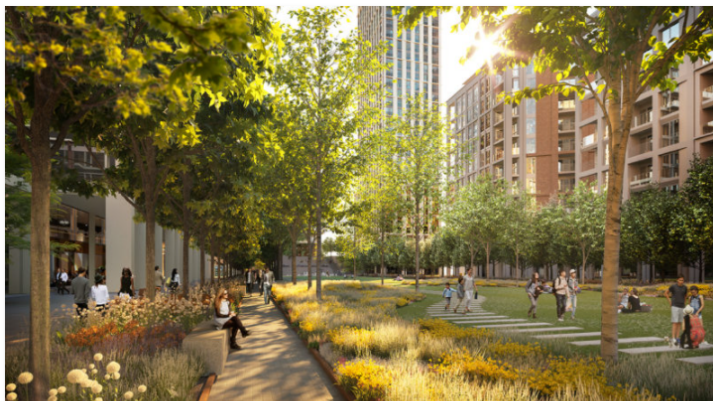
URL

<https://www.londonpropertytimes.co.uk/stylish-penthouses-now-available-at-berkeleys-twelve-trees-park/>

LONDON
PROPERTY TIMES
PRESTIGIOUS LONDON REAL ESTATE & LIFESTYLE



PROPERTY NEWS ▾ NEW DEVELOPMENTS ▾ PROPERTY FINANCE ▾ HOME & GARDEN ▾ TRAVEL CONTACT ▾



Hot Properties

Stylish penthouses now available at Berkeley's TwelveTrees Park

November 22, 2021 Editorial Team 0 Comments Berkeley Homes, Luxury Penthouse, The Verdant Collection, Twelve Trees Park

The first penthouses have been launched at Berkeley's TwelveTrees Park, an exciting new place in the heart of the London borough of Newham. Known as The Verdant Collection to reflect the surrounding green areas, such as the development's new 4.5-acre WiFi-enabled park, these modern apartment suites represent a luxuriously elevated London lifestyle.

The penthouses, the first to be made available since TwelveTrees Park launched in July 2020, are on sale from £1,100,000. They provide residents with dramatic views across The City, Canary Wharf, Stratford and the rest of Newham. Set over 1,000 square feet, the homes include three double bedrooms, two of which have en suite bathrooms, as well as a large living and dining area, a modern kitchen and a private terrace.

expert inhouse team at Berkeley. Buyers have a choice of three colour palettes for their kitchen and bathrooms: 'Quartz'; a contemporary take on the timeless classic contrast of light and dark, 'Emerald'; a striking and luxurious mix of emerald and gold inspired by the world's finest jewels and 'Onyx', a deep and sophisticated palette contrasting earthy and rich charcoal and sand tones.

Fixtures and fittings are provided by the highest quality brands, including a state-of-the-art NikolaTesla hob from Elica, which features an innovative system that powerfully extracts downwards, and an integrated multifunction dishwasher from Siemens. Meanwhile, fitted wardrobes in the bedrooms provide an elegant solution to storage needs.



Justin Tibaldi, Divisional Managing Director at Berkeley Homes (Capital), comments: "The Verdant Collection is a set of penthouses of the very highest quality and represents an attractive opportunity for people looking for modern, stylish living in one of London's fastest growing boroughs.

"TwelveTrees Park is extremely well-connected with five transport lines running through West Ham station and has great investment potential. Launching these penthouses is another exciting step in TwelveTrees Park's progression from a derelict brownfield site into a dynamic new neighbourhood with over 3,800 homes, a new school and a myriad of new retail and commercial businesses."

Sean Gavin, Operations Director at Berkeley Homes (South East London), adds: "We are very pleased to unveil our elite collection of penthouses at TwelveTrees Park. With impressive views over London's iconic skyline, an exceptional quality finish and a location within close proximity to the bustling entertainment, business and financial hubs, these stunning penthouses provide the ideal city home."

Berkeley's [TwelveTrees Park](#) is set to provide 3,838 one- two- and three-bedroom homes, in addition to shops, restaurants, a 4.5-acre WiFi-enabled park and a new base for the East London Science School. Health and wellbeing are central to its design, with over half the development dedicated to green space - encouraging sustainable and balanced lifestyles in the city.

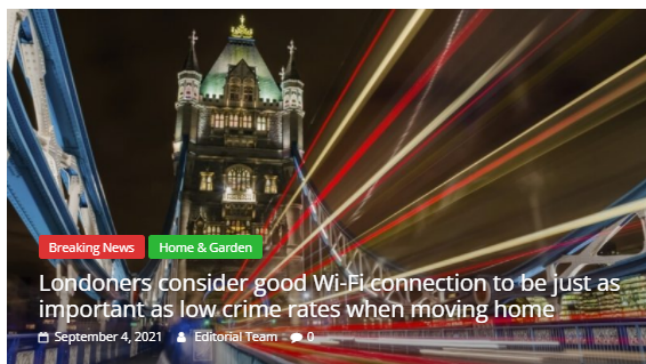
Prices at TwelveTrees Park start from £552,500, with the first homes, at Evergreen Point, due to be completed and ready for occupation by 2025. The Sales & Marketing Suite is located on Manor Road, E15 3FQ, a short walk from West Ham station, and is open Monday to Saturday, 10am-6pm with a late-night opening on Thursday until 8pm, and Sundays 10am-4pm.

To view more information about the penthouse suites, the brochure can be downloaded [here](#). Visits are by appointment only; call 020 3925 6192 to book an appointment or visit <http://www.twelvetreespark.london> for more information.



LONDON PROPERTY TIMES

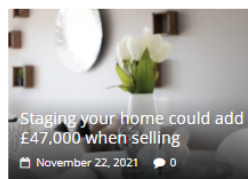
PRESTIGIOUS LONDON REAL ESTATE & LIFESTYLE



Breaking News Home & Garden

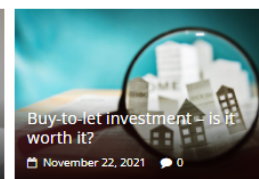
Londoners consider good Wi-Fi connection to be just as important as low crime rates when moving home

September 4, 2021 Editorial Team 0



Staging your home could add £47,000 when selling

November 22, 2021 0



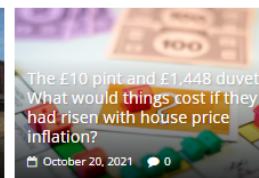
Buy-to-let investment - is it worth it?

November 22, 2021 0



London rents forecast to increase 5.5% in 2022 as current market values breach pre-pandemic levels

November 1, 2021 0



The £10 pint and £1,448 duvet: What would things cost if they had risen with house price inflation?

October 20, 2021 0

Property News



Property News

Brownfield could actually deliver 1.3m new homes worth £487 billion

November 1, 2021 Editorial Team 0

Rishi Sunak, the Chancellor of the Exchequer, last week announced that the government would finally utilise Britain's brownfield to help address the housing crisis, investing £1.8bn to deliver 160,000 new homes on 15 hectares of currently dormant land..



London Super-Prime Lettings Insight

October 20, 2021 0



Foreign buyer return could boost London house prices by £134k

October 1, 2021 0



Nearly 400k property transactions hit by down valuations in the last year

September 4, 2021 0



Britain's houses are getting smaller but more expensive

September 4, 2021 0



Hot Properties



Hot Properties

Stylish penthouses now available at Berkeley's TwelveTrees Park

November 22, 2021 Editorial Team 0

first penthouses have been launched at Berkeley's TwelveTrees Park, an exciting new place in the heart of the London borough of Newham. Known as The Verdant Collection to reflect the surrounding green areas, such as the development's new 4.5-acre WiFi-enabled park, these modern apartment suites represent a luxuriously elevated London lifestyle..



New Developments



Luxury Properties for sale

